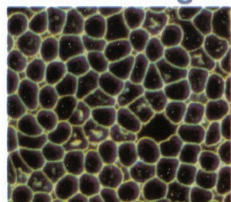


Symplasts: Formations of excess free colloids, other blood elements, organelles, unassimilated nutritional reserves, chemicals, and toxins.

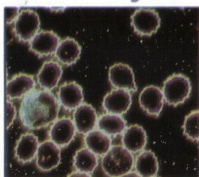


These are usually signs of blood alkalinity. A highly dangerous condition if left untreated.

Blood Sludge: High blood cholesterol levels, blood fat chemistry imbalance, cancer and chemotherapy. Affects the efficiency of circulatory and immune systems. Can decrease kidney blood flow by 50%



Poikilocytes: Red blood cells that have been overloaded with saturated lipids in their membranes.



If the body does not have enough highly flexible, unsaturated and polyunsaturated fatty acids available, rigid, saturated lipids are incorporated into the membrane instead.

This reduces the ability of the cell to exchange critical nutrients, wastes, and protective products.

Healthy Healing

Treating the cause not the symptoms

NATURAL HOLISTIC TESTING AND THERAPIES

Live Blood Analysis.

€

Live Blood Analysis 40.00

Video of session 5.00

Live Blood Retest 25.00

Oxygen Therapies

IBS Treatments.

Lymphatic Massage.

Mineral Analysis

Candida Specialist

Weight Loss Programs

Heavy Metal Testing and Detoxification

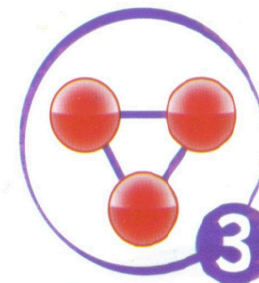
www.healthyhealingcy.com
info@healthyhealingcy.com
26343512 | 97788931

Vournas Tou Pefko 10
St.George, Coral Bay
PAPHOS, 8560

Healthy Healing

Treating the cause not the symptoms

LIVE BLOOD ANALYSIS



Excellence In Oxygen And Nutritional Therapy

Caroline Carter
CAM Practitioner CN, RMP

LIVE BLOOD ANALYSIS

WHAT IS LIVE BLOOD ANALYSIS?

Live Blood Analysis is a revolutionary technique that enables us to observe the characteristics of your blood – there and then.



The examination of live blood is valuable for the early detection of serious health conditions. We also gain an improved understanding of current problems. The condition and quality of your red blood cells have a direct impact on your present and future health, with stress and disease appearing in the blood years before they manifest in the body. Healthy blood is vital to healthy, disease-free existence.

Live blood testing enables us to see your blood exactly as it behaves inside your body, giving a clear picture of your health at a cellular level.

Blood is the river of life. If the blood is unhealthy you ultimately will be too.

WHAT DOES LIVE BLOOD ANALYSIS INVOLVE?

One drop of capillary blood is obtained from your fingertip using a sterile lancet. This is then placed on a slide covered with a cover slip to protect it from the outside elements.

Your blood is then examined immediately under a very high powered microscope and the results captured on camera, enabling you to view your live blood – still interacting and moving around – on a video screen.

Based upon your Live Blood observations, we can recommend specific protocols to cleanse and rejuvenate your body by altering the underlying biological terrain. Many people with long term chronic and undiagnosed problems have been greatly helped and even completely cured following live blood analysis and by taking our advice.

WHO IS IT FOR?

Live blood analysis is for everyone that really cares about their health and overall wellbeing.

This holistic test is suitable for young children right up to mature people in their seventies or above.

As "prevention is better than cure" it is not just for people who have health problems; it is equally beneficial to very healthy people who wish to remain so because it acts as an early warning system to the possible onset of disease.

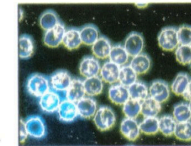
Many of the common degenerative illnesses that exist in our modern society such as diabetes, high blood pressure, heart disease, ME and obesity can be directly linked to what we eat and drink.

A small change in diet and advice on correct nutrition is often all that is required to stay well and prevent unnecessary illness.

The following pages illustrate live blood conditions seen in our clients.

CONDITIONS SEEN IN LIVE BLOOD ANALYSIS WHICH LEFT UNTREATED HAVE THE POTENTIAL TO CAUSE SERIOUS PROBLEMS.

Acanthocytes: Red Blood Cells with symprotit inclusions. Suggestive of liver or spleen dysfunction. Essential fatty acid deficiency can be a factor.

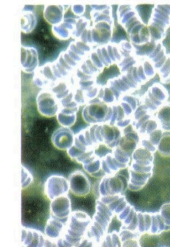


Ascits:



Generally represent the presence of foci. These forms are commonly observed in cases of oral pathology, mouth conditions, and all types of dental foci, including amalgam fillings, root canals, cavitations, etc.

Rouleau:



The stacking together of RBCs. This condition is often related to severe cell dehydration, imbalanced electrostatic properties, pH imbalance, extreme digestive insufficiency, or chronic organic degenerative disease.